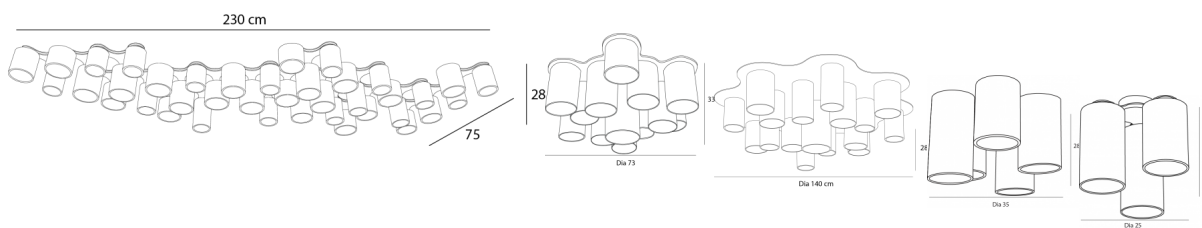
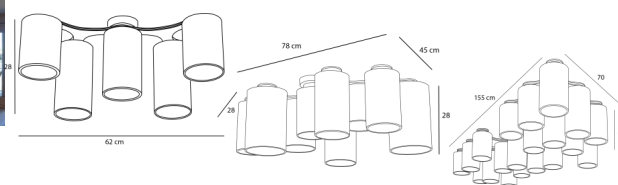
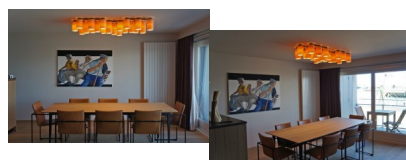
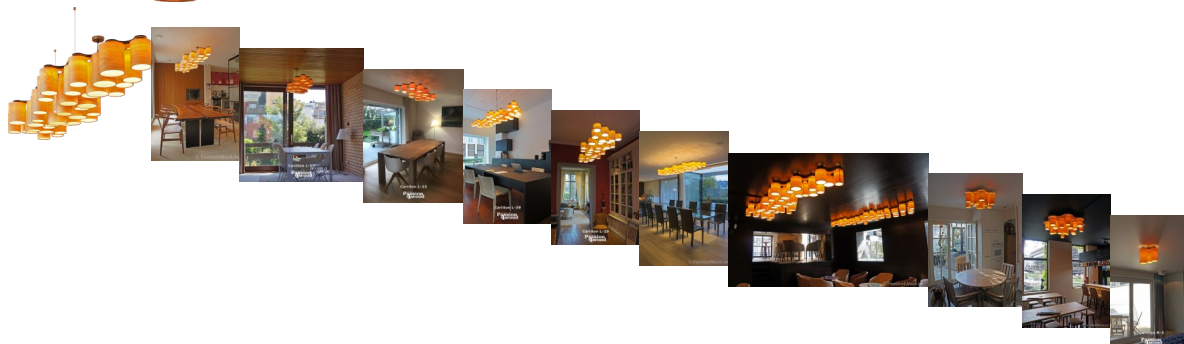


Carillon



Rating: Not Rated Yet
Price

[Ask a question about this product](#)

Description

With the warm colour of the maple holders, its refined shape and the pleasurable LED lights this bewitching light design will surely be the eye-catcher in any given space.

We have a few standard models available which can be used as a pendant lamp or attached directly to the ceiling. More info in our spec sheet which you can download [here](#)

Every lamp is custom build by hand in Belgium and can be adapted according your needs. As such we can make bigger/smaller structures, move the position of the wiring so it fits perfectly .

Most of the time we work with maple wood veneer, but you have also the option to choose Oak, Walnut wood, Zebrano.

For more information you can always contact us.